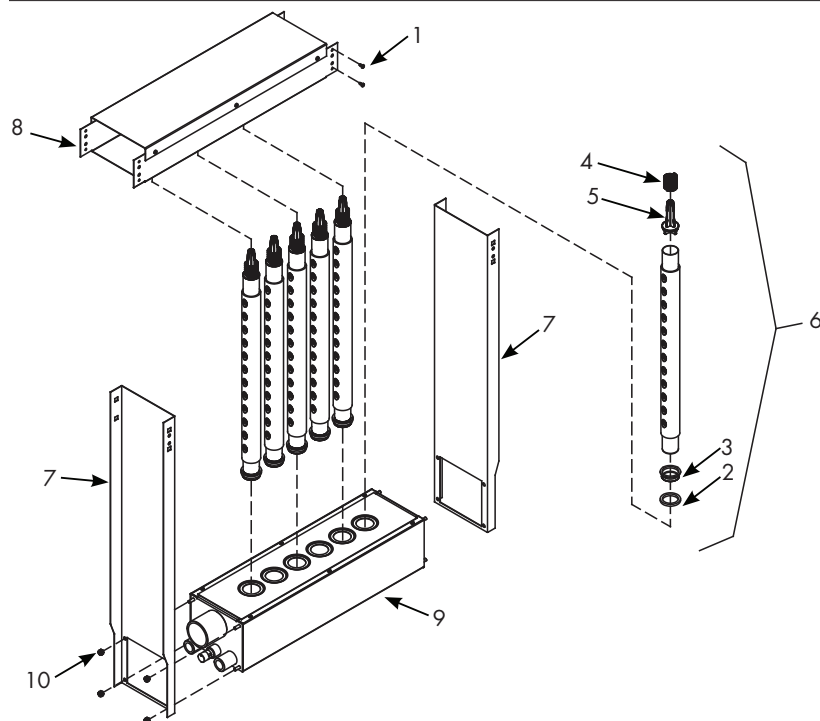


## Replacement parts

**FIGURE 32-1: ULTRA-SORB MODEL XV REPLACEMENT PARTS**



**Table 32-1:**  
Ultra-sorb Model XV replacement parts

No.	Description	Part No.
1	Screws, frame (package of 4)	191170-010
2	O-ring, square 1.35" ID (package of 10)	191170-015
	O-ring, square 1.77" ID (package of 10)	191171-015
3	Ring, tube end, 1.5" (package of 1)	207010-001
	Ring, tube end, 1.5" (package of 5)	191170-020
	Ring, tube end, 2.0" (package of 1)	207010-002
	Ring, tube end, 2.0" (package of 5)	191171-020
4	Spring, compression, SST (package of 1)	501460-001
	Spring, compression, SST (package of 5)	191170-025
5	Plug, tube end, 1.5" (package of 1)	310260
	Plug, tube end, 1.5" (package of 5)	191170-030
	Plug, tube end, 2.0" (package of 1)	310261
	Plug, tube end, 2.0" (package of 5)	191171-030
6	Dispersion tube assembly	consult factory

**Table 32-1:**  
Ultra-sorb Model XV replacement parts

No.	Description	Part No.
7	Flange, side	consult factory
8	Frame assembly, top	consult factory
9	Header assembly	consult factory
10	Nut, 1/4-20 (package of 4)	191170-035
	HVAC sealant for duct section applications	consult factory
	Electric modulating steam valve	consult factory
	Pneumatic modulating steam valve	consult factory
	On-off valve assembly	consult factory
	Electric temperature switch	400260-001
	Pneumatic temperature switch	307076
	Inlet strainer	consult factory
	Steam trap	consult factory
	Control board	408496
	Float switch	408420-004